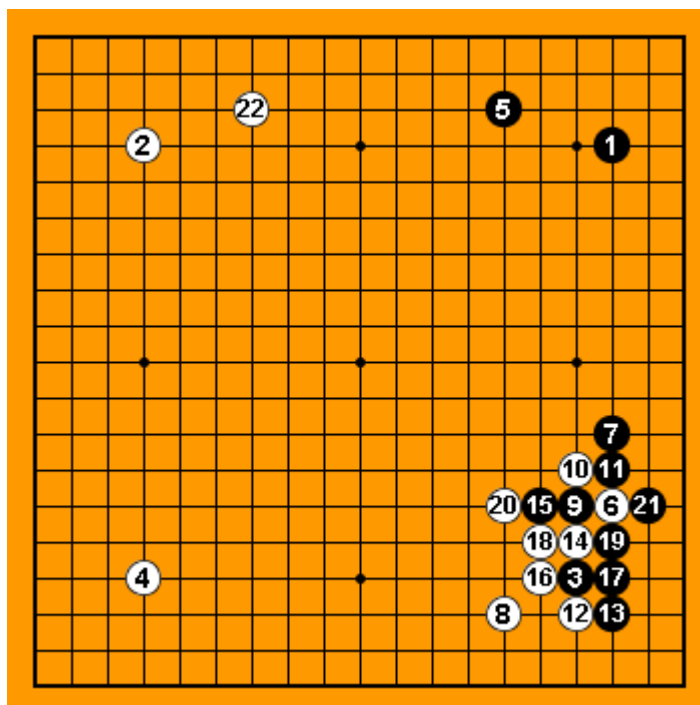


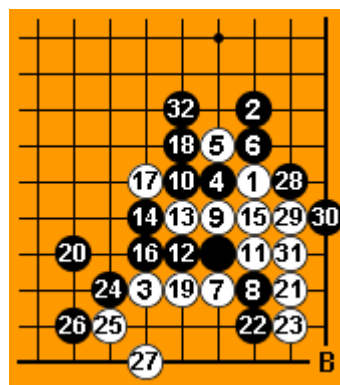
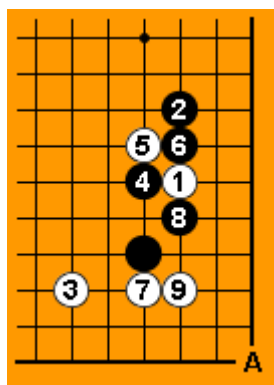
New joseki, invented by Seo Bongsoo, 9-dan



White 16 on the main diagram is the move, invented by Seo Bongsoo, 9-dan in his game against Lee Jaeung, 1-dan in 2002. Seo, 9-dan won this game by resignation.

What is the goal of Black, 13? You can see the most common joseki on Diagram A. Black is keeping sente and usually has nothing to complain. Black 13 on the main diagram is used mainly in special cases (if Black is playing for influence)

You can see the standard joseki on Diagram B. In the real game, Lee Jaeung, 1-dan was trying to reach this result, but Seo, 9-dan spoiled his plan.



The result till Black 21 on the main diagram is locally better for Black, but actually it's equal, because White is keeping sente.

You can see, that it's not always necessary to follow the josekis. You can easily invent your own patterns instead!