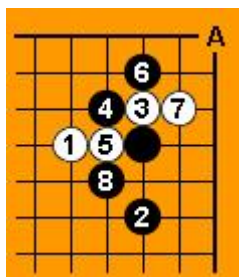


Korean trick move #1.



I have never seen it played by professionals, but it's rather popular in Korea. Korean amateurs often play it (there are 498 examples in Bigo Assistant Full Edition, mainly from Korean Go servers).

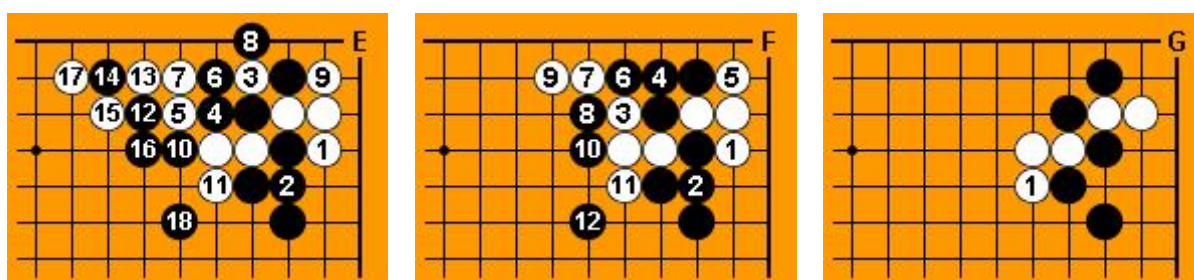
There is a similar pattern, which can be found in pro games (Diagram-B):



White can sacrifice the corner easily, getting a better result (Diagram-B).

Black's corner on Diagram-C would be much bigger, so White has to find another possibility. Wrong answer #1. White can take the corner (Diagram-D), but it would be too small. The outcome is clearly favorable for Black.

Wrong answer #2. It is not easy for White to win the capturing race (Diagram-E):

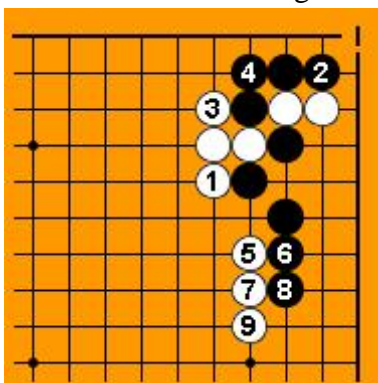
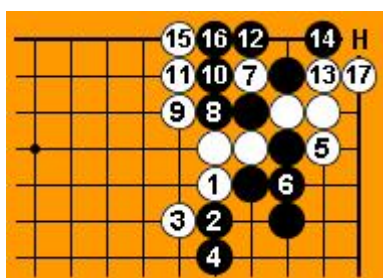


Wrong answer #3. Again, White cannot capture the cutting stones, because of the geta (Diagram-F)

The correct answer is on Diagram-G. It is very difficult to find it in real games, so you have to remember it. White's goal is to sacrifice the corner.

Black can try to fight (Diagram-H), but it's ko and White captures first.

The best way for both sides is Diagram-I. White makes a huge wall and the result considered to be slightly favorable for her.



Now you can use it in your games. Enjoy!